



PROGRAM THE ULTIMA ESPERANZA TOUR





THE ULTIMA ESPERANZA TOUR

This program involves different activities such as navigation to the glaciers in the Ultima Esperanza Fiord, trekking and sightseeing at beautiful landscapes with native flora and fauna, ancient forests, let alone the majestic views of Torres del Paine National Park. Besides, you will have the chance to visit a local cattle ranch and enjoy the adventure of walking into the wild Patagonia. All these incredible experiences in one program! Come discover the end of the world with us, and get enchanted by its magic just like the former explorers did.

All the itinerary and stops are subject to weather conditions and captains judgment.

PROGRAM

DAY 1 **Arrival in Puerto Natales** Free time in Puerto Natales. Overnight at Alamo Patagonico Hostel

DAY 2 BLMACEDA AND SERRANO GLACIERS NAVIGATION

06:00 HRS Breakfast at the hostel.

07:00 HRS Check-in at the tour agency office. Transfer to Puerto Bories.

08:00 HRS Sailing over the Señoret Channel and Ultima Esperanza Fjord up to Bernardo O'Higgins National Park. During navigation, some stops at spots of beautiful mountains, waterfalls, traditional Patagonian cattle ranches, flora and fauna and the Balmaceda Glacier, not getting off the ship but free to move over the deck to enjoy the trip and take pictures*

11:30 HRS Visit to the Bernardo O'Higgins National Park. Trekking in the coihues and ñirres forest up to the foot of the Serrano glacier, reaching the nearest viewpoint at the end of the trail.

13:00 HRS Returning on board and sailing back. Drinks service on board - whisky or orange juice with the glacier ice.

14:00 HRS Lunch at Estancia Turística Perales.

16:30 HRS Arrival to Puerto Natales.
Overnight at Alamo Patagonico Hostel.

DAY 3 FULL DAY TORRES DEL PAINE NATIONAL PARK

06:00 HRS Breakfast at the hostel.

07:30 HRS Pick up* at Alamo Patagonico Hostel and transfer to Torres del Paine National Park. Most of the tour is covered by car, trekking to be done from the route to some viewers only. It is a full day excursion, to visit the main areas of the park as the well-known lookout points to the awesome mountains, valleys, lakes, glaciers, rivers and of course, the distinctive three granite peaks or "towers" and the horns or "cuernos" encompassing the Paine Massif, which is the centerpiece of the National Park. This tour is suitable for all publics, all tracks to walk are short and marked as low difficulty.

13:30 HRS Lunch at campsite** (campsite may vary)

17:00 HRS Visit to the Milodon Cave.

18:30 HRS Return to Puerto Natales.
Overnight: Alamo Patagonico Hostel.

*Van shared with the group unless passengers request private transportation at an additional cost.

**Lunch, water, snacks not included.

DAY 4 FULL DAY ESTANCIA PERALES, TREKKING "CAMINO DEL FIORDO"

08:00 HRS Pick up at Alamo Patagonico Hostel. Transfer to Estancia Perales.

09:00 HRS Arriving in Estancia Perales. Briefing while having a delicious and energizing breakfast before starting walking.

10:00 HRS Trekking on "The fjord Route" or "Camino del fiordo" to La Carcacha lake.

12:00 HRS Resting and snack time.

13:30 HRS Trekking back to the Estancia

14:00 HRS Arriving in the estancia hut. Lunch.

16:00 HRS Return to Puerto Natales.
Overnight at Alamo Patagonico Hostel.

DAY 5 END OF PROGRAM

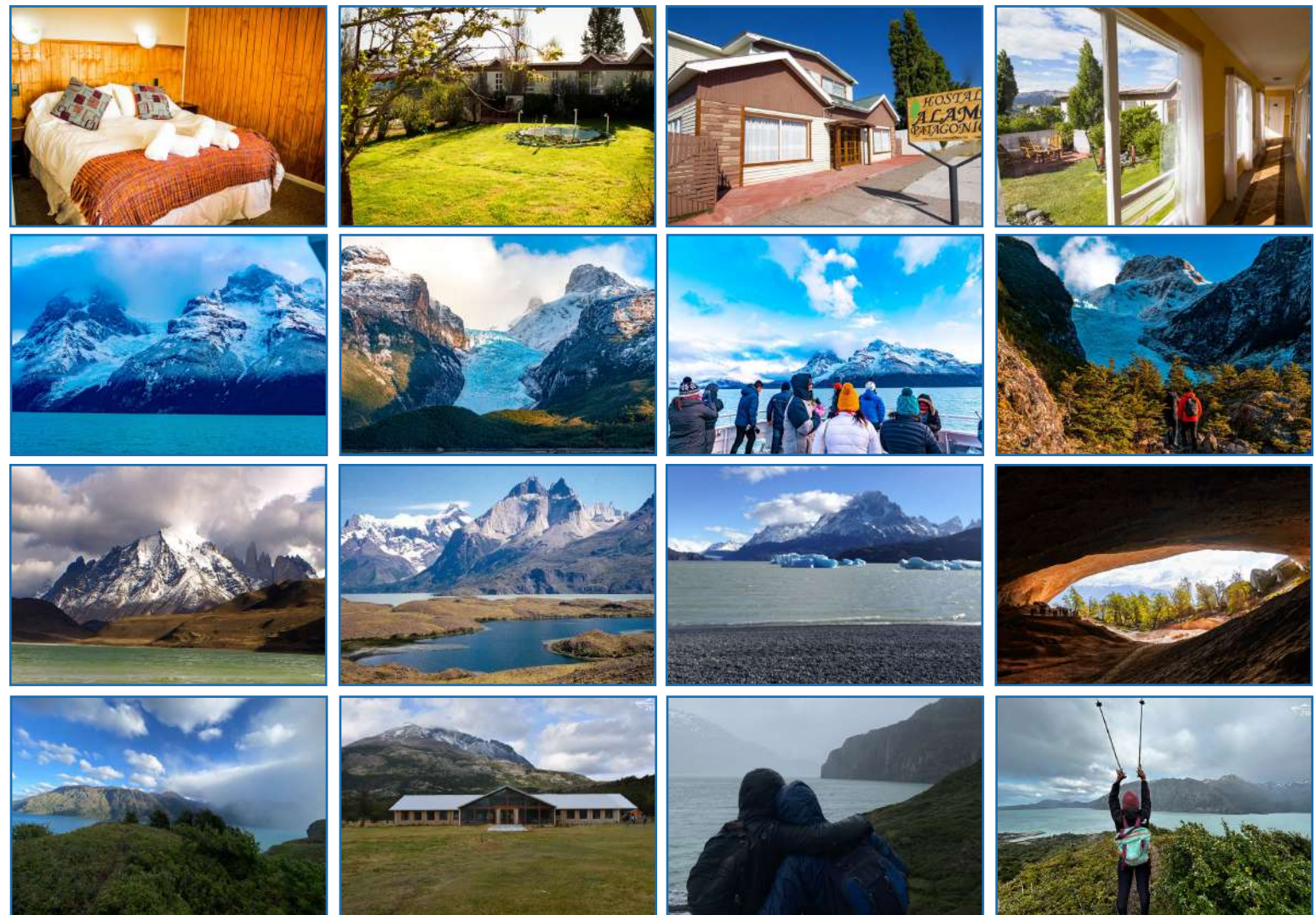
06:00 HRS Breakfast at hostel.

11:00 HRS Check out. End of service.

TEMPORADA

Operating Season: September 2023 to 31 March 2024

Duration: 5 days and 4 nights



INCLUDES



Natal Transfers-
Perales-Natales Ranch



Accommodation in (4 nights)
Alamo Patagonico Hostel



Guide of
hiking



Guides with
WFR certification



Breakfast in hostel,
Lunch at Ranch



Appetizer Navigation
Glacier Ice Whiskey



Bernardo O'Higgins
National Park Tickets



Sure of
Navigation

NO INCLUYE



Transfers from airport or
bus station to accommodation



Torres del Paine
National Park Tickets



Monument Tickets
Milodon Cave



Dinner



Stick



Eberhard N° 560, Puerto Natales, Región de Magallanes y la Antártica chilena - Chile
Patagonia Chilena

Phones: +56 61 2614420 - +56 61 2614423
Mail: info@turismo21demayo.cl

  /turismo21demayo

www.turismo21demayo.com